

# VIKINGEN



Volume 73 Issue 6

Leif Erikson Lodge 2-001 • Sons of Norway • Seattle, WA

JUNE 2018

## PRESIDENT'S MESSAGE



*Hilsen fra Presidenten.* I hope you are getting out and about and enjoying the sunshine. It definitely brightens up one's spirit as we say good bye to a long cold winter !

Congratulations to Jan Quam on being recognized as Woman of the Year and to Seth Maristuen on receiving Man of the Year award. They are both exemplary Volunteers!

Jan has stepped up this past year to help out in the Lodge office and filling in as a Greeter; she is also an expert lefse maker and helped teach a lefse class. We hope she will do that again. Seth is not only an Auditor on the Board but also helps coordinate the Leif to Leif Fun Run, bartends at membership meetings and is now working on the Publicity Team creating flyers! Thank you to both of you for your hard work and contributions to our Lodge!

We welcomed our friends from Swedish Club for the Norwegian/Swedish Exchange on May 12th. The RSVP list kept growing and growing and we had almost 90 people in attendance! Adam McQueen from Skål Beer Hall provided delicious samples of two sausages they will be serving at their new beer hall which will open this summer on Ballard Avenue. Lexi from Old Ballard Liquor will be creating her delectable delights for their menu. We also sampled local beer, wine and mead which all seemed very popular with the crowd. Velkommen til Skål Beer Hall! We can't wait!

Have I mentioned we have many great Volunteers at our Lodge. Recently Theresa Nilsen and family pressure washed the garage and outside of the lodge, Gwen Weinert planted new shrubs and flowers in the front planters and Ellen Beck has done a fantastic job tracking our members. She sent dozens of letters to new members and those receiving years of membership pins. Bjarne Varnes arranged to have the stumps ground down and all the weeding done out back. Our friend Ozzie said, "Send me the bill". We couldn't survive without all the time and effort that these people put into our Lodge! Mange takk!

As we close out the first half of the year with one more membership meeting on June 13th, keep in mind we will still be busy this summer with the annual cleaning, remodeling Norna Room and perhaps getting new

PACIFIC COAST  
NORWEGIAN SINGERS ASSOCIATION  
*presents*

## SANGERFEST GRAND CONCERT

SATURDAY, JUNE 23  
7:00 PM

A concert of Scandinavian and American choral music for men's voices, featuring combined choruses from cities along the length of the Pacific Coast, from Bellingham to San Diego.

Tania Opland and Mike Freeman join us as special guest performers.

Enjoy the concert as part of the Midsommer Fest celebration presented by the Sons of Norway Lodge in Poulsbo.

TICKETS: \$20 Adults  
\$15 Under 18



<https://sangerfest2018.brownpapertickets.com>

SUQUAMISH  
CLEARWATER CASINO RESORT  
BALLROOM AREA

Velkommen til Poulsbo

More information: [pcnsa.org/events/](http://pcnsa.org/events/)



carpet in the lobby. Thanks to all those who have donated to GoFundMe to support the ongoing maintenance and repairs for our building. We also thank the donors to GiveBIG for their generosity on May 9th! From those donations and proceeds from Randi Aulie's special dinner in April all the 2018 scholarships have been funded! I will see some of you at our District SON Convention May 30-June.

If you are taking a summer vacation please send a postcard to me at the Lodge and we will incorporate them into a membership meeting program this fall. God tur! We would also like to hear from our "Expatriate" Lodge members living abroad.

Ha en god sommer! *Til vi møtes igjen.*

Fraternally,

**Gail Engler, President, Leif Erikson Lodge**

**OFFICERS**

**President** Gail Engler  
cody24gracie@hotmail.com

**Vice-President** OPEN

**Counselor** Andrea Torland  
andreaajule@msn.com

**Secretary** OPEN

**Asst. Secretary** Megan Knight  
meganknight77@gmail.com

**Financial Secretary** Ellen Beck  
206-523-6642 ebeckster@gmail.com

**Treasurer** Theresa Nilsen  
206-362-6837 pearcity@comcast.net

**Cultural Director** Ariane Westin-McCaw  
arianewm@yahoo.com

**Social Director** JoAnne Rudo  
206-329-1443 joannerudo@hotmail.com

**Musician/Sports Dir.** Kathleen Lange  
206-354-7029 tatter59@me.com

**Co-Youth Directors** Kari VanSanford  
206-915-8490 kari.vansanford@comcast.net

Evelyn Elliott  
206-755-2151 elliottevelyn@yahoo.com

**Librarian** Chris Sand  
206-783-4897 chr.sand@frontier.com

**Historian/Pub. Dir.** Christine Anderson  
206-784-6181 cmadance@earthlink.net

**Sunshine Committee** Arlene Templin  
206-784-1290

**Norna** Judy Gray/Diane Adams  
206-783-1274

**Leikarringen**

Sheila Bartanen. Pres. 206-859-0640

**Leif Erikson Building Assoc.**

Bjarne Varnes President 206-571-9728

**LERÅ**

Jim Sketchley President jimsketchley@gmail.com

**SON Lodge-Financial Benefits Counselor**

Bill Nelson 425-785-6433

Gary DeLeon, Bg Caretaker 206-427-9235  
or 206-551-0317

**VIKINGEN**

Leif Erikson Lodge No. 2-001

Sons of Norway

2245 NW 57th Street, Seattle, WA 98107-3134

**Phone:** (206) 783-1274

**Webpage:** www.LeifEriksonLodge.com

**Email:** leiferiksonlodge@qwestoffice.net

**Email:** LEBARentals@qwestoffice.net

**Membership Meetings:**

2nd Wednesday beginning at 7:30 pm  
(or as announced)

The **Vikingen** has been published since 1945  
by Leif Erikson Lodge No. 2-001  
Sons of Norway. LEL  
was founded on May 13, 1903.

Leif Erikson Lodge Presents:

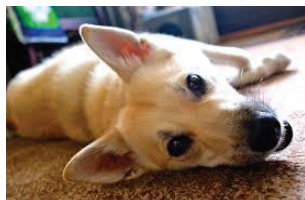
# JUNE 13TH MONTHLY MEMBERS MEETING

Join us for our monthly membership meeting and dinner. We will begin with social hour at 5:30 followed by dinner at 6. This month's dinner will be a potluck! Please bring a dish to share with the group, or feel free to enjoy the spread for \$15.

This month we will learn about the Norwegian Buhund, a working dog popular in Norway for hundreds of years! Kay Shertzl from Bothell Lodge will talk about the ancient history of the Norwegian Buhund, dog of the Vikings. These dogs traveled with the Vikings over sea and land. After the talk, Buhund Hjalmar, accompanied by lodge member Kathleen Lange, will demonstrate a Rally Obedience course.

We hope to see you there!

Call the office or RSVP to [LeifEriksonLodge@qwestoffice.net](mailto:LeifEriksonLodge@qwestoffice.net)



## June Potluck & Members Meeting

**Social 5:30 pm**  
**Dinner 6:00 pm**

## Buhund History & Obedience Show

**Business Meeting**  
**7:30 pm**

**Call the lodge office  
to reserve your seat  
or RSVP by email**

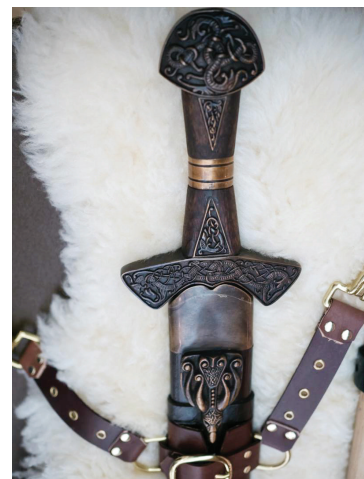
## SONS OF NORWAY LEIF ERIKSON LODGE

2245 NW 57th Street  
Seattle, WA 98107  
206-783-1274

[www.leiferiksonlodge.org](http://www.leiferiksonlodge.org)

## NORDIC MUSEUM HERITAGE CAMP SUPPORTED BY LEIF ERIKSON LODGE 2-001: Get your reservations in now for June 25-29!

**Monday-Friday, June 25-29, 9am-3pm: Nordic Museum Heritage Camp - Nordic Animals:** Heritage Camp is open to boys and girls ages 7-12, and will be a week of fun activities and crafts related to Nordic animals! We are happy to announce that the Leif Erikson Lodge 2-001 is again co-sponsoring camp. Reservations are necessary and can be made by contacting Alison Church at 206.789.5707 x7019 or [alisonc@nordicmuseum.org](mailto:alisonc@nordicmuseum.org). Please provide Alison with your Sons of Norway membership number to receive the discount. Cost: \$200 Museum Members, \$150 Leif Erikson Lodge Members (thanks to an extra subsidy they are providing to their members), \$250 general admission. Alison Church Children's Education Coordinator, NORDIC MUSEUM, 2655 NW Market Street | Seattle, WA 98107 | tel 206.789.5707 x7019 [www.nordicmuseum.org](http://www.nordicmuseum.org)



### SAVE THE DATE! RAISE SOME FUNDS FOR LEBA!

The Vikings are Returning!

Sunday, September 16, at 5pm Leikarringen will sponsor our second annual Viking Dinner. Last year won accolades and was great fun so don't miss out. Take a step into the past as the Leif Erikson Sons of Norway auditorium is transformed into a Viking encampment longhouse. This event offers a delicious dinner with Viking era foods that everyone raved about last year. The evening also features entertainment including Viking music, Skål songs, Lur horn calls, traditional stories and brief talks about Viking armaments, clothing and history. We also feature a silent auction and a Viking bar where you can buy Viking Beer and Mead. Viking dress is encouraged to add to the fun. Tickets are only \$25 each and can be purchased at the Lodge office or through Brown Paper Tickets. This is a fundraiser for the Leif Erikson Building Association.

**Sheila Bartanen** President of Leikarringen of Leif Erikson Lodge 2-001

### TREASURES SALE DURING SEAFOODFEST JULY 14 AND 15, 2018--VOLUNTEERS NEEDED

July 14 and 15, 2018

This summer is another opportunity to discover the treasures in the Leif Erikson Lodge catacombs. Do you know a young adult just starting out in a new apartment? Need some glassware for aperitifs at your ski cabin? Ready to change out your old, tired decorations for something really retro? It is also another opportunity to part with those items you no longer want cluttering up your home or vacation home! We need clean, gently used items, unused items, tools, Scandinavian items, books, small furniture items (chairs, small tables), clean clothes preferably Norwegian sweaters or costumes etc. No large furniture or electronics. If you would like to rent a table of your own to sell your own items (no commission) \$20 for an 8 ft table. You would need to set up your table for sales, price your own things, and take care of your own business dealings.

Volunteers needed to:

Create flyer/poster for event and put out signs for our event.

Price items prior to event (Contact Kathleen Lange [tatter59@me.com](mailto:tatter59@me.com) or [Claire.abd@outlook.com](mailto:Claire.abd@outlook.com))

Make cookies for event—drop off cookies at the Leif Erikson Hall office on Mondays, Wednesdays, and Fridays. Please put in containers with label for Seafoodfest on outside.

Set up on Friday in the garage with tables, chairs, items

Sales on Saturday from 10AM-3PM, cashiers and helping people find things

Sales on Sunday from 11AM-3PM, cashiers and helping people find things

Clean up on Sunday after 3PM—pack up leftovers for either the bazaar or other agency (Goodwill/Value Village) (Contact Kathleen Lange [tatter59@me.com](mailto:tatter59@me.com))

Volunteers are especially needed for Friday set up and Saturday. Contact Kathleen Lange [tatter59@me.com](mailto:tatter59@me.com) or [Claire.abd@outlook.com](mailto:Claire.abd@outlook.com). Event depends on volunteers and hours will be determined by volunteers signing up!

## EINAR JOHANSON WINS TRIP!

Friday, Feb. 16, 2018, was a lucky day for Einar Johanson, member of 2-001 in Seattle, WA. He was the winner of the Tubfrim drawing to give away a ticket to Norway, worth up to \$1,000. His postcard was drawn from among 1,141 cards. With one card for every pound sent to Norway, that means that Sons of Norway sent at least 1,141 pounds of stamps or approximately 1,711,500 stamps to Tubfrim in 2017. Last year, 83 Sons of Norway lodges and numerous individual members participated in the program. This compares to 1084 pounds shipped to Norway in 2016 from 70 participating lodges.

### What is Tubfrim?

Tubfrim was established in 1928 by Postmaster Ditlef Frantzen in Nesbyen, Norway. The aim was to collect and sell used stamps and use the proceeds to aid in the eradication of tuberculosis among Norwegian children. Today, children and youth with disabilities and special needs receive the proceeds from the resale of the stamps. Sons of Norway has been involved with the organization since 1980, and is its major contributor of stamps from a group outside of Norway.

### Win a Ticket to Norway

While helping children is a great motivation for Sons of Norway members to participate, there is a special incentive to say "thank you." For every pound of stamps collected, the member or lodge can enter a drawing, held in the first quarter of the year, to win a round trip ticket to Norway, worth up to \$1,000.

### Have questions? Need information?

Information on Tubfrim, along with contact information for district coordinators, is available [online](#). Questions can also be referred to Mary Bennett, Tubfrim Chairperson, 608-837-8335 or [mjbenn4@gmail.com](mailto:mjbenn4@gmail.com).

Cards to enter the drawing are available from Sons of Norway Supply Department, 612-821-4645 or 800-945-8851 option 6 or [supply@sofn](mailto:supply@sofn).

## NEW MEMBERS:

- Carol Marie Batteen
- Charles Franklin Carpenter
- Victoria Cattle Carpenter
- Decatur Carpenter Eells
- Gideon Carpenter Eells
- Nicole Rae Darty
- Neil Claiborne Porter III "Charlie"
- Jackson Odin Porter
- Else Janine Lindsey
- Erling Mork
- Peder Mork
- Joely Johnson Mork
- Marit Irene Nordbo
- Cynthia D. Padilla
- Kenneth Alan Porter
- Martin Sjolie
- Birger Kristian Steen
- Monika Steen
- Julia Steen
- Anna Steen
- Isabelle Webster

## LEIKARRINGEN AND NORSK FOLKEDANS STEMNE PRESENT OUR ANNUAL SALMON DINNER ON AUGUST 15, 2018

Wild Salmon dinner buffet and Norwegian folk dancing performances with featured dance artists Tom Sears, musicians Loretta Kelley with her magical hardingfele and flatfeet and Bill Likens on torader and accordion! on August 15, Wednesday 6 PM Dinner 7:30 PM Performance followed by public dance and instruction with our local Norwegian musicians Leif Erikson Hall, 2245 NW 57th, Seattle WA 98107 TICKETS Adults 13 and older: \$25 Children 6-12: \$15 Children 0-5: Free On August 15 at 6 PM enjoy a wild salmon dinner buffet created by Tom and Bonnie! Following the amazing dinner view the elegant Norwegian dances performed by Tom Sears and his partner, accompanied by the dramatic music of fiddler Loretta Kelley or Bill Likens playing his lively torader or accordion. Proceeds benefit the programs of Norsk Folkedans Stemne, a 501(c)3 dedicated to Norwegian music and dance. The event is sponsored by Leikarringen of Leif Erikson Lodge 2-001, Leif Erikson Lodge 2-001, Norsk Folkedans Stemne, Leif Erikson Building Association. Proceeds benefit the educational programs of Norsk Folkedans Stemne, a 501(c)3 organization dedicated to Norwegian music and

dance. Afterwards, there is dancing for everyone. Seating is limited so buy your tickets early! Norsk Folkedans Stemne presents Tom Sears, Loretta Kelley, and Bill Likens at our Salmon dinner and Norsk Folkedans Stemne! Look forward to performances and instruction in traditional dances and music from Norway at Norsk Folkedans Stemne being held at historic Fort Worden this year. Check our website. What is a Norsk Folkedans Stemne? In Norway, a stemne is a gathering of folk dancers and musicians sharing their knowledge of dances and music. Now in our fourth decade, we carry on this living tradition with select group of dance and music instructors. Norwegian folkdance groups from Canada, the United States, and Norway share this wonderful opportunity to dance favorites, learn new dances and music, and information. Come and enjoy the immersion for all levels of dancing from beginning to advanced into all the types of Norwegian folkdancing and music from the bygdedansar, runddansar, songzdansar, and turdansar og rekkedansar (figure dances and longways dances). Our website will have updates as to the dances being taught. [www.seattlestemne.org](http://www.seattlestemne.org)

## SPORTS MEDAL PROGRAM

Time to start earning sports pins again! Just because you have earned a pin in the past, does not mean you are off the hook! Swimming, walking or hiking, bicycling are all great summer time activities. There are some cards in the lodge, but the easiest way to get started is to print out a tracking sheet from Sons of Norway national website, [www.sofn.com](http://www.sofn.com). In order to access the sports program information you will need to set up an account, so have your member number ready. When you have completed a level, give your tracking sheet to sports director Kathleen Lange, [tatter59@me.com](mailto:tatter59@me.com). Contact Kathleen with any questions.



## KAFFESTUA KROKEN APRIL/MAY 2018

Happy Spring!!!!

Our *Kaffestua* café is open and welcoming, and we're happy to serve you Monday, Wednesday and Friday from 10:00 am to 2:30 pm. For a donation of only \$5.00, it still remains the best place in Ballard to get a wonderful lunch, along with friendly conversation and live music, usually on Fridays. There's always a fresh pot of coffee brewing, with great traditional open-face sandwiches, heart waffles and yummy sweets to be had. And, if you're interested in volunteering with us, please contact Diane Aronsen, who is looking forward to hearing from you. Please call her at 206.783.4491 if you have any spare time to help, or if you could be available on-call. Thanks!!

### Volunteers Lately at Kaffestua Include:

Reidun Totland, Karen Sheldahl, Magne Erga, Valborg Nordbo, Magni Hinsee, Lee Ehrheart, Helga Moen, Laurie Lund Gonzales, GunnMarit McArthur, Perdis Jacobsen, Irene Kleviland, and Lisa Greenough. Tusen takk to all volunteers!

### People Who Recently Donated Food Items and Whose Names Were Listed in the Book:

Magni Hinsee, Diane Aronsen, Vidar Warness, Helga Moen, Kari Knutsen, Judy Browning, Irene Kleviland, Reidun Totland, Norma Larson, Sonja Adams, Valborg Nordbo, Karen Sheldahl, Lisa Greenough, Vickie Nelson, and Laurie Lund Gonzales.

Many thanks to all of you for your generosity!

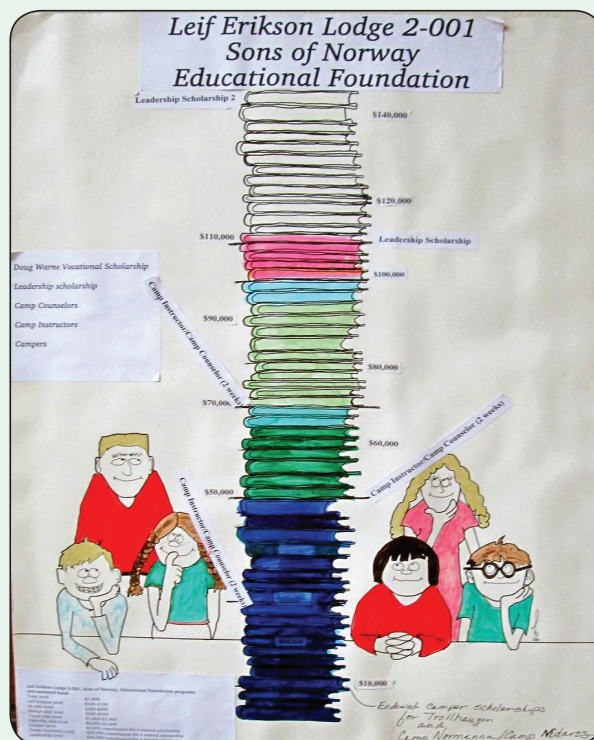
### Musicians Who Recently Entertained Us:

Trygve Bjorndal

Music makes a difference. Thank you so much!

- **Bernie Bowers**

## GIVEBIG AND APRIL DONATIONS TO THE EDUCATIONAL FOUNDATION



Tusen takk to our donors at our last two fundraisers for 2018. Many thanks to those you contributed to GiveBig on May 9 the last GiveBig in Seattle! GiveBig donations totalled \$1703. Our final numbers for the April fundraising dinner are \$1029.83 plus \$700 in donations for a total of \$1729.93. For our April and May events the total came to \$3432.93 to add to our Educational Foundation. At the June meeting we will be adding a few more books to our stack!

## NEWS FROM NORNALADIES

We will gather for the last time before our "summer break" on Tuesday, June 12. We are going "out" to lunch at the Norse Home, 5311 Phinney Ave North. We will meet there at 11:30am. Please RSVP by Friday, June 8, so we can give the folks at the Norse Home our count for lunch.

Have a great summer. Our "new year" of lunches/meetings will begin on Tuesday, September 11.

**Judy Gray and Diane Adams, Co-presidents**

## LEBA UPDATE: APRIL/MAY DONATIONS TO GOFUNDME

We only need a few thousand dollars more to reach our goal of \$96,000! Help us meet that goal! It is time to give our 33-year-old building a renewal and the excitement is really building. Various members have taken on smaller projects to help the building and our exterior property look better.

### VOLUNTEERS AT WORK AND PLAY!

The stumps have finally been removed in the back parking lot along with most of the weeds. It is now ready for some more permanent improvements. The work was paid for by our neighbor, Ozzie Kvithammer/ Mountain Pacific Bank.

Theresa Nilsen, the LEBA treasurer, and her husband Per, have power washed the back wall. They got it painted too! The pigeons have been nesting in our back stair wells. Theresa was able to get the moss and all the pigeon debris removed! The pigeons immediately began building nests again on the freshly cleaned space, but caretaker Gary was able to put up bird scare tape and remove some nesting material before the pigeons were able to take control again. What an improvement! Then on to the front of the building and cleaning the red "carpet" and sidewalks.

Judy Gray, in addition to doing rental contracts as a volunteer, has been busy buying additional good flatware to go with our original set AND buying new flag poles, flags, eagles and spear topper for the stage area. A longtime desire by the historian. Our broken eagle wing is no more!

Ken and Sheila Bartanen are also working on their little plot in the front. Unfortunately the dogs and the cigarette butts have done in the plant so they are coming up with a new plan for that area.

Gwen has now planted some barberry in the front planters to discourage sitting on the planters. She has been busy weeding with Gordon Jackins to get the place spiffed up.

Kari Knudsen has been paying for pest control around the building for quite some time. It seems to have helped as the planters are no longer being dug up by these very persistent creatures!

### Some other volunteers who may not have been mentioned before are:

Mark Quam and Bill Alsvick added new hooks and stainless steel wires for the hanging lights in the hall.

Gail Engler provided new flags for the exterior flag poles just in time for 17th of May.

Gwen Weinert, Christine Anderson, and Katrina Sharpe Svasand have been busy developing the plan for improvements, getting quotes, selecting materials for the Norna Room and entry way. Hopefully by September you will see a much improved interior. Many thanks to Howard Slauson and Per Nilsen for their assistance as contractors in reviewing additional needs.

**Mange tusen takk to these hardy volunteers.** Am hoping for some warm days for them so the work is a little more enjoyable! Summer weather is here at last!

These GoFundMe donations are designated for only large repairs and upgrades needed to improve our building. Kaffestua and rentals are the main contributors to other repairs and everyday expenses such as the electric and water bills. Our one electrical box on the exterior of the building was recently removed so it can no longer be accessed for phone charging by the local neighborhood.

### Donations from April 15, 2018- May 9, 2018

**Phyllis Morse, \$200**, In memory of Alice Sagstad

**Gail Engler, \$200**, In memory of recently passed members  
**Earl Ecklund, \$100**

**Mabel Rockness, \$100**, In memory of Tom Oswald Jr.

**Jon and Susan Hanson, \$200**

### In kind donations:

**Judy Gray, \$510.77 for flags, poles, and flatware**

**Ken and Sheila Bartanen, \$250 in gardening supplies**

**Theresa and Per Nilsen, \$200 for gas for power washer**

**Christine Anderson, \$150 in cleaning and fundraising supplies**

**Gail Engler, \$200 for exterior flags**

**Gwen Weinert, \$75 for gardening supplies**

**Kari Knudsen, \$1080 for pest control**

### Have a skill you would like to share with us this summer?

**Painters** for smaller rooms, such as the Norna Room, bathrooms, lobby, repainting parking stripes, handicap sign, etc.

**Caulkers** for various small jobs in the hall and around the exterior of the building.

**Window expert** to replace window in Auditorium.

**Carpenter** to replace/repair short fence near the driveway.

Build counter tops for Norna Room,

**Cabinet installer** for new cabinets in Norna Room.

**Plumber** for new sink in Norna Room.

**Demo experts** for removal of carpeting, trim work cabinets, etc.

**Wood refinisher** for our Sons of Norway podiums also in need to minor repairs. These are from the 1950s and need some refreshing!

**Cleaning** of vents, doors, upper level work in auditorium, kitchen, other small rooms on June 26 and June 27 or longer if needed. Lunch will be provided. Sign up on the bulletin board.

### Other news:

**A landscaping** plan has been received and will be reviewed for implementation.

**A lighting contractor will be providing a plan for replacing our lights with LEDs and equipment.** He is working under a city subsidy. This was not part of GoFundMe plan, but only recently came to our attention. We all know LEDs are more efficient and require far less maintenance! Additional donations could help this project be completed by the August deadline!

**Contact Christine Anderson at [cmadance@earthlink.net](mailto:cmadance@earthlink.net) or leave a message at Leif Erikson Hall if you can help with these tasks!**

**Please remember to refer your friends to Leif Erikson Hall for rentals such as birthday parties, anniversaries, special events, weddings, and more. Rentals are the best way for our lodge to receive operating funds for the many monthly expenses we have such as electricity, water, sewer, taxes, etc.**

If you would like to make a donation by check, please mail your donation to Leif Erikson Building Association, 2245 NW57th Street, Seattle WA 98107. Please make your check out to LEBA. Write a note in the memo line: GoFundMe so we know it is part of the fundraising efforts. Envelopes for GoFundMe are now available in several locations in the building so you can put your donation in the envelope and drop it in the mail slot even when no one is in the office. You can also come into the office and drop off your donation. For credit/debit card donations (especially if you want your airline miles) go to: <https://www.gofundme.com/leif Eriksonlodge>

## CULTURAL DIRECTOR REPORT

We've had a Culturally rich spring so far, with the opening of the new Nordic Heritage Museum and all the associated cultural events and performances. It's exciting that there are so many active cultural performance groups in Seattle.

We'll continue into June with a Cultural Program at our membership meeting on June 13 featuring some special guests. The Norwegian Buhund is one of three National dog breeds of Norway. Zone 3 Director Kay Schertzl and her Norwegian Buhund Gaia will provide us with an opportunity to learn first-hand about this breed. Our own Kathleen Lange will also bring her Norwegian Buhund, Hjalmer. Kay will give a talk on the 3 National dogs of Norway and the Norwegian Forest Cat. Kay and Kathleen will have their dogs do demonstrations to illustrate the

characteristics of the Norwegian Buhund. If you like dogs, then you won't want to miss this meeting.

Other Cultural opportunities coming up include the Folk Art competition at the District 2 convention. I know some of our lodge members will be entering the contest and I really look forward to seeing the pictures. I'm working on Cultural programming for the fall and winter, specifically a baking class before the holidays. If you have a cultural interest that you'd like to see more of at the lodge please get in touch with me and we'll see if we can work it in. I'm interested in member suggestions so please do get in touch if you have something you'd love to see.

**Ariane Westin-McCaw**, Cultural Director  
arianewm@yahoo.com

## 2<sup>ND</sup> SATURDAY KAFFESTUA

Weekday Kaffestua volunteers Laurie Lund-Gonzales and Lisa Greenough kindly helped us in May. Thank you, Laurie and Lisa! It was another fairly quiet day and we missed some of our "regulars". Imagine our joy when Norma Larsen and her daughter, Sonja, came in with family from Norway! Definitely the highlight of the day! They had also gone to the Nordic Museum opening the week before. President

Gail Engler was also on hand. Nancy Hiraoka missed all the guests when she arrived with her accordion, but was very happy to play for Laurie, Lisa, and Gail. She plans to play on June 9th as well, the last 2nd Saturday before we break for summer. Please join us for co fee, delicious open-faced sandwiches, waffles and all the rest! Remember, it's truly the best deal in town!

- **Nancy Hiraoka**

## EVENTS COMING UP THIS SUMMER AT NORWAY PARK

St. Hans Fest/Midsummer, all day, on Saturday, June 23. Activities include Prize/Cake Walk, Kids' Field Games, Bingo, Café, Swimming, Beach, Big Raffle, Dancing & the Huge Traditional Bonfire. At the Lake, 24020 Pavilion Drive, Mount Vernon, WA. Lodge members and their guests are welcome. \$5 entrance fee. Lodge Picnic & Tur Pass Tur: Saturday, August 11,

starting at Noon. The picnic is in the Upper Park (22128 State Route 9) on the left as you enter the gate. Lunch is provided, please bring a dish to share, and a \$5 donation is requested. You are welcome to go on the Tur Pass Tur--a nature walk with questions and prizes, \$1.

Hope to see you at the Park this summer!

- **Nancy Solheim**

## OBITUARIES

**Tore Vollan** died on April 30, 2018, at age 87, after a short bout with leukemia. He joined the Lodge in 1967 and was a Life Member and a member for over 50 years. He was born in Trondheim, Norway. He immigrated first to Canada where he worked in logging. In 1956, he immigrated to the United States. On his first night in the U.S., he met his future wife, Kari, at a Norwegian dancing hall. They married in 1958 and raised two children, Bente and Mark. Tore worked as a superintendent in the construction industry and in the fishing industry in Alaska. He is survived by his loving wife of nearly 60 years, his daughter Bente, his son Mark Thor, and his granddaughter Hannah Noelle. The Memorial will go to the Fred Hutchinson Cancer Research Center.

**James "JD" Ward** died on March 17, 2018, at age 46. He had only just joined the Lodge. He will be missed by

his family and friends. The Memorial will go to the Leif Erikson Educational Foundation.

**Karsten Tjernagel** died on April 26, 2018, at the age of 82. He joined the Lodge in 1971, and was a Golden Member, being with the Lodge over 47 years. He is survived by his daughter, Sandy Farrow and her family. The Memorial will go to the Leif Erikson Educational Foundation.

Our sympathy to member Lars Ollestad on the passing of his wife **Maureen Ollestad** on April 1, 2018. Maureen enjoyed the annual Crab Feed dinner and many years of camping at Norway Park. She is remembered as a loving mother, grandmother and wife, a compassionate, warm and caring person and will be missed by Lars and the whole family.



Leif Erikson Lodge 2-001

2245 NW 57th Street  
Seattle, WA 98107-3134

Non-Profit Org.  
U.S. Postage  
PAID  
Seattle, WA  
Permit #672

*Address Service Requested*

First Name Last Name

Address

City, State, Zip Code

Please notify the Financial Secretary (Ellen Beck) of changes in Name, Address, or Phone Numbers.  
Please also let her know of a death of a family member.

## SUMMER CALENDAR

June 9<sup>th</sup>: 2nd Saturday Kaffstua and Happy Hour

June 13<sup>th</sup>: Members Potluck Dinner & Youth Activity  
(last meeting until Sept.)

June 23<sup>rd</sup>: Saturday SANGERFEST GRAND CONCERT

June 23<sup>rd</sup>: St Hans Fest/Midsummer at NORWAY PARK

June 26 & 27: Lodge Cleaning  
(Lodge will be closed June 25-July 8)

July 3-6: Kaffestua Closed

July 8<sup>th</sup>: BORDER FEST @ Peace Arch Park, Blaine, WA

July 14<sup>th</sup>: Annual D2 Steak Fry @ TROLLHAUGEN

July 14 & 15: Seafood Festival in Ballard & LEL Garage Sale

August 11<sup>th</sup>: Saturday D2 GOLF TOURNEY in Spokane, WA

August 11<sup>th</sup>: Tur Pass Tur & Lodge Picnic @ NORWAY PARK

August 15<sup>th</sup>: Salmon Dinner,  
Leikarringen & Folk Dance Stemne

September 12<sup>th</sup>: Fall Members Meeting and Dinner

September 16<sup>th</sup>: Viking Dinner for LEBA

September 22<sup>nd</sup>: Ski For Light Annual Fish Dinner

## FINANCIAL BENEFITS FOR MEMBERS

### Great News

Effective MAY 1st, Sons of Norway has INCREASED the INTEREST RATES on their ANNUITY certificates. All deposits greater than \$10k are also eligible for an additional 1 year bonus rate.



Call me today to review or compare.

**Bill Nelson**

425-785-6433

ffihealth@gmail.com

Beginning with the 2018 summer season, **Leif Erikson Recreation Association** (also known as **Norway Park**) will charge a \$5 day use fee for all Lodge Members and Member guests. Norway Park will have a camp host at the beach gate collecting day use fees, camp fees, and checking membership status. Current membership card (Lodge 2-001) and valid photo ID must be available at all times while at the beach. Lodge members are limited to a maximum of 10 guests within a group. Larger groups are welcome and possible with advance arrangements and pavilion rental. Visit Norway Park website for additional information: [www.norwaypark.org](http://www.norwaypark.org)

